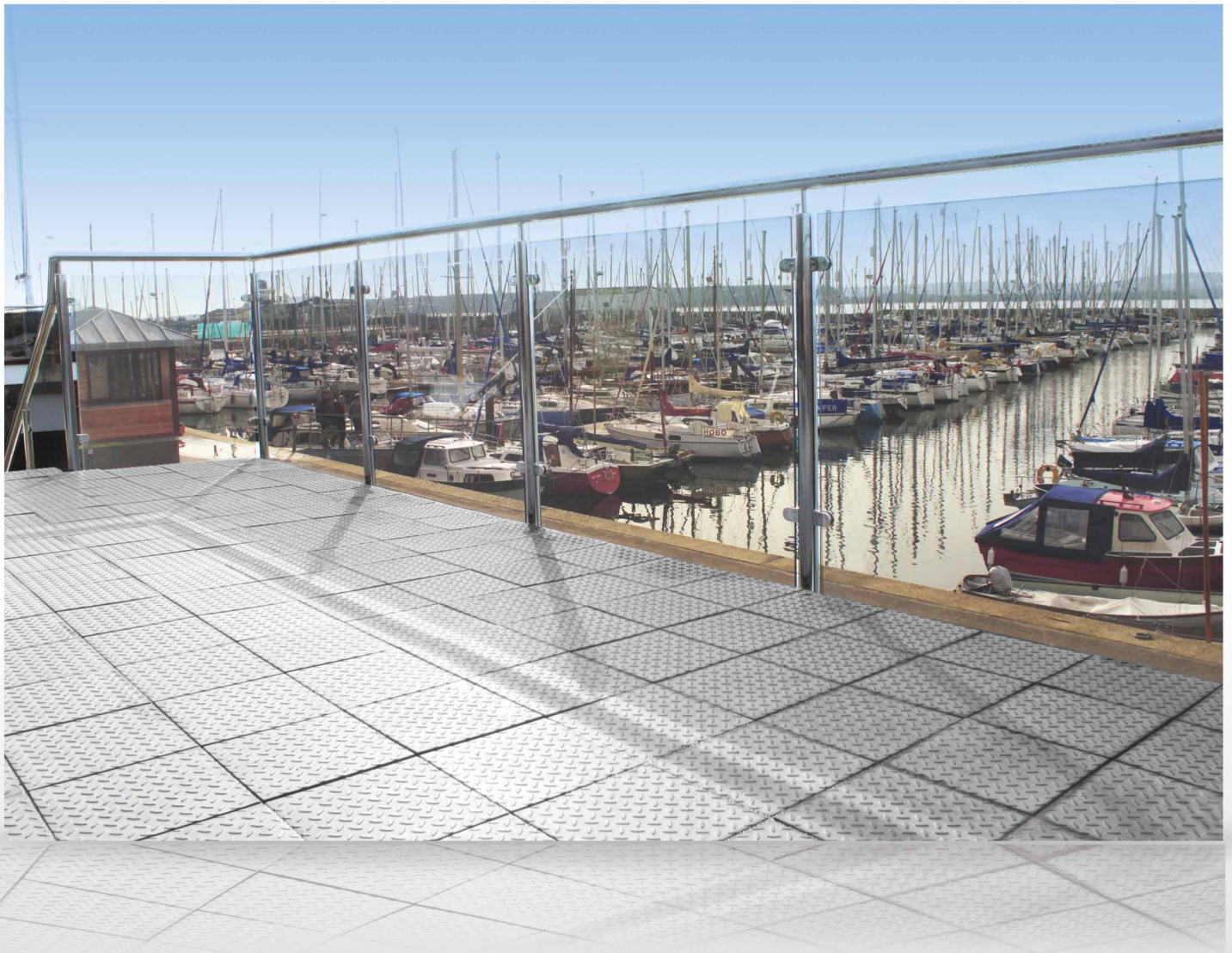




eurodec

Promenade Tiles

www.eurodec.uk.com



The **Premier** GRC Promenade Tile System

About us

We are the UK's leading manufacturer of GRC promenade tiles. The business was launched in 2008 to utilise a wealth of knowledge and expertise dating back to the products original inception some 20 years ago. Our staff benefit from a combined total of over 50 years experience, without parallel in this very specialist field. Accordingly the business has gone from strength to strength. The core ethos is centred on a commitment to provide quality, value and service to our ever expanding customer base. We pride ourselves in our ability to provide a personal approach to each of our customers requirements as well as offering unrivalled technical assistance on every practical consideration.

Where can Promenade Tiles be used?

Promenade tiles are designed to provide a protective pedestrian finish for waterproofing substrates such as asphalt, bituminous felt, single ply and fibre glass, as well as concrete and timber decks. Our range of tiles can transform a flat roof area into a stylish living space such as a eco-friendly roof garden. Applications as diverse as industrial walkways to penthouse balconies have all benefited from the addition of promenade tiles.

Typical applications include:

*Terraces / Roof Gardens / Utility Rooms / Spectator Galleries / Courtyards / Maintenance Accesses / Pathways / Conservatories
Swimming Pools / Wet-rooms*

Why use Promenade Tiles?

All Eurodec promenade tiles are manufactured in the UK at our Somerset based factory to the highest standards using advanced concrete production technology. The finest quality raw materials are sourced from leading suppliers. These include high strength cement, silica sand, limestone aggregates, glass fibre reinforcement and product strengthening admixtures. The tiles are subject to a rigorous program of quality checks including in-house testing to determine tensile strength in accordance with BS EN 1170-5: 1998 . The unrelenting commitment to quality affords customers total peace of mind when using our products.

What makes our promenade tiles unique is their flexural strength, this results from the inclusion of glass fibre reinforcement. Most flat roofing decks are subject to movement under load or changes in temperature. Our promenade tiles are able to absorb the deflection and compression arising from normal pedestrian foot traffic, which, due to their rigidity, may cause other types of tiles such as ceramic or stone to crack or detach from the substrate.

The lightweight nature and reduced profile of promenade tiles is hugely advantageous compared to traditional paving. This ensures suitability for almost any flat roof construction. Similarly unlike some wood-decking or recycled rubber products they are anti-slip, vermin proof and will not rot, warp, bend or exude carbon deposits. In relation to comparative products promenade tiles offer the most cost efficient solution by some margin. Available in a wide range of attractive surface patterns and in a multitude of colours promenade tiles are the first choice for any flat roof.

Where can I buy Eurodec Promenade Tiles?

As a manufacturer we prefer to supply our products through a network of leading roofing stockists across the UK. For further details of your nearest supplier please contact us via phone or Email.

Can I see a sample tile before purchase?

Full size samples are available on request for delivery the following day anywhere in the UK. This allows the best possible representation of your chosen tile. Similarly you can visit our factory showroom at Wincanton in Somerset.

Environmental Statement.

Eurodec Promenade Tiles Limited are increasingly aware of the demand for sustainable building materials. Because we believe businesses such as ours have a responsibility to reduce their environmental impact we continually strive to make our products greener. This approach led us to pioneer the use of Ground Granular Bulk Furnace Slag (GGBS) as a mix constituent enabling the reduction of the tiles carbon footprint by as much as 40%. The material, a by-product of the steel manufacturing industry exhibits cementitious properties so not only significantly improves the quality of the concrete but also affords the tiles a much greater sustainability rating, an important consideration for architects when specifying building products.

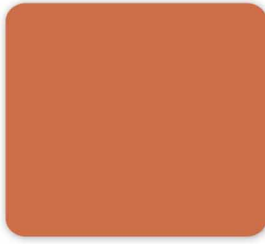
In addition we endeavour to recycle packaging waste from raw materials as well as seeking to minimise our environmental impact in terms of energy, water and logistics. We take very seriously the duty of care placed upon us to protect the environment for future generations.

Colours

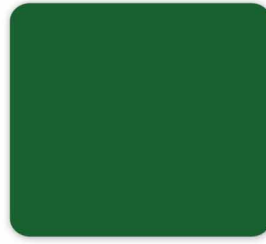
All tiles patterns are available in the following colours. Bespoke colours can be manufactured to order, please contact us for more information



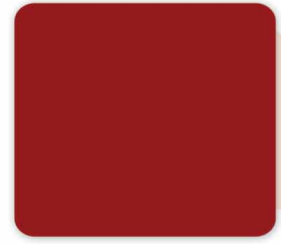
Yellow



Terracotta



Green



Red



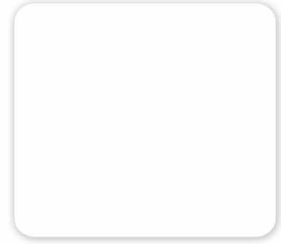
Champagne



Buff



Grey



White



Charcoal



Aged Terracotta



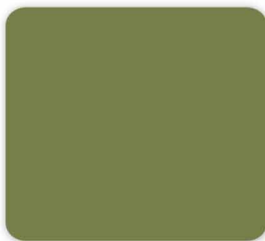
Aged Quantock Red



Purbeck Stone



Cornish Slate



Heritage Green



Mint Green



Marble (White with Black veins)



Red Marble



Terracotta Marble



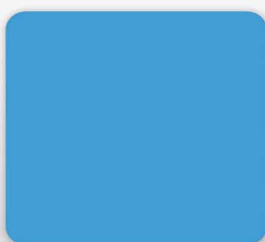
Grey Marble



Purbeck Stone Marble



Mahogany



Blue



Hamstone



Mendip Grey

Products

Checkerplate

The checkerplate tile is a timeless classic, both functional and utilitarian it delivers where a practical, anti-slip surface is sought. Uniquely our bevelled edge detail allows a continuous pattern to be achieved enhancing the overall effect.

Nominal Size: 297 x297 x 12mm

Weight of each tile: 2.2kg approx

Coverage: 11 tiles per square metre



Striated

The striated pattern exhibits natural contours to provide an organic appearance. Subsequently it has proved popular with those seeking a visually attractive finish coupled with a high degree of slip resistance.

Nominal Size: 297 x297 x 12mm

Weight of each tile: 2.2kg approx

Coverage: 11 tiles per square metre



Regency

Our unparalleled attention to detail and commitment to quality has resulted in a riven finish so defined it is indistinguishable from natural stone. Available in an unrivalled choice of colours it provides a solution where aesthetic excellence is required as well as the strength and durability offered by GRC.

Now available in half tile sizes.

Nominal Size: 297 x297 x 15mm

Weight of each tile: 3kg approx

Coverage: 11 tiles per square metre

Half Tile Size: 300 x 150 x 15mm

Weight of each tile: 1.5kg approx



Eclipse

Inspired by the elegant beauty of natural slate flooring. The subtle riven finish reproduces the finely textured features associated with this metamorphic stone.

Now available in quarter tile size.

Nominal Size: 297 x297 x 12mm

Weight of each tile: 2.2kg approx

Coverage: 11 tiles per square metre

Quarter Tile Size: 150 x 150 x 15mm

Weight of each tile: 0.5kg approx



Bauhaus

This tile finish acknowledges the simplification of form as characterised by modernist design. Both contemporary and stylish with an emphasis on the visual aesthetic.

Nominal Size: 297 x297 x 12mm

Weight of each tile: 2.2kg approx

Coverage: 11 tiles per square metre



Diamond

Reminiscent of a traditional surface design popular in Victorian England where it was widely used in courtyards and stable blocks. This robust pattern provides plenty of grip whilst also exhibiting rustic charm.

Nominal Size: 297 x297 x 12mm

Weight of each tile: 2.2kg approx

Coverage: 11 tiles per square metre



Antique

The natural beauty of travertine is faithfully recreated with this pattern. The tumbled edge detail and distressed appearance lends the tile added authenticity.

Nominal Size: 297 x297 x 12mm

Weight of each tile: 2.2kg approx

Coverage: 11 tiles per square metre



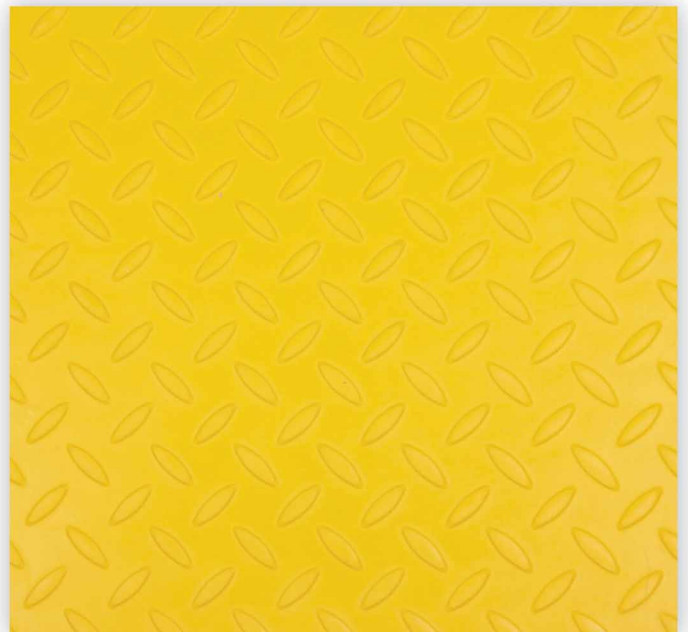
GRP Sanded / Checkerplate

The most lightweight promenade tile system available, GRP tiles ideal for applications where loading is a major consideration. Exceptional levels of slip resistance, quick and easy to install. Available in any colour.

Nominal Size: 297 x297 x 6mm

Weight of each tile: 0.5kg approx

Coverage: 11 tiles per square metre



PU Adhesive

Eurodec PU Adhesive is a structured, moisture curing polyurethane adhesive. A clean, easy to use and cost efficient fixative it is specifically designed to bond Eurodec Promenade Tiles to most roofing substrates. It can be used in damp and humid weather conditions that normally prohibit the laying of tiles. Supplied in 1.5Kg bottles as well as new 1.4KG cartridges and applicator gun as illustrated.

Coverage per PU Bottle: 50 tiles approx

Coverage per PU Cartridge: 45 tiles approx



Technical Installation Specification

Performance

The tiles have been extensively evaluated and exhibit excellent tensile and impact strength. Freeze-thaw tests show the tiles to be unaffected by climatic extremes normally experienced in the UK. In addition they are solar reflective providing UV degradation and thermal stress protection. Classified as non-combustible and designated Class 0 for building regulations.

Storage

Packed ex-works onto wooden non-returnable pallets of 500 with foam sheet cushioning and shrink wrapped for maximum protection. Pallets should not be stacked more than 2 high on a level base, avoid point loading. It is essential the pallets are stored in dry conditions at all times to prevent water ingress. Failure to comply with this may result in staining, discolouration and efflorescence.

Appearance

With the exception of grey tiles finest quality iron, chrome and titanium oxides are incorporated at optimum levels to achieve an attractive range of colours. Tiles are resistant to fade by UV light under normal climatic conditions. Due to the inclusion of naturally occurring minerals and the possibility of differential drying colours and shade variations may occur between batches. The true aesthetic of the tile may not be revealed until exposure to sunlight and weathering have taken place. Whilst every effort has been made to combat surface efflorescence; high levels of cement are required for strength, the addition of a lime reacting agent (Metakaolin) should minimise the risk as far as is possible. In the event of staining or discolouration toughness, performance and all other characteristics will not be affected.

We recommend checkerplate tiles are laid with the surface pattern direction positioned correctly so it corresponds with adjacent tiles. It is suggested when laying striated tiles the direction of the striations should alternate in order to achieve best overall appearance.



Site Preparation

The substrate should be cleaned and properly prepared to receive tiles; debris, loose material and standing water must be removed prior to work commencing. The roof should be laid to a minimum fall of 1:80 but not exceeding 1:40. Any unevenness or defects in the roof must be made good to ensure a level surface on which to tile. Squares must be marked out on the intended area allowing for manufacturers tolerances and for equal margins where cut down widths may be needed. A 3mm gap should be left between tiles to allow for building movement as well as to maintain straight joints. Where tiled areas exceed 9sq. metres an extra movement joint of 15mm should be provided at 3 metre intervals in both directions. Similarly this joint must also be formed at perimeters, abutments and junctions of bays. A pointing compound suitable for this application may be used to fill the joints. Special attention should be paid when laying tiles onto build-up felt systems, manufacturers advice should be sought to avoid projection at overlaps which in turn may lead to point loading.

Cutting

It is recommended cutting tools are equipped with diamond tipped blades, this will result in a cleaner cut. DO NOT cut tiles near finished areas as the dust produced will solidify and stain on contact with laid tiles. Tiles strips cut less than 75mm (quarter tile) should be avoided. Suitable PPE must be worn to protect against the inhalation of dust.

Fixing

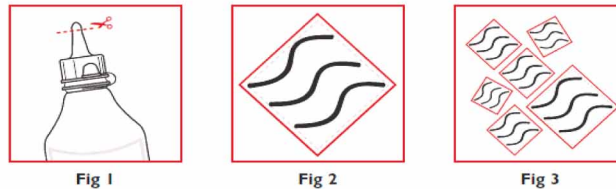
Eurodec PU Adhesive can be used to bond Eurodec tiles to both felt and asphalt. Tiles must be laid in accordance with manufacturers instructions. See specification below.

Hot bitumen may be used to bond tiles to felt roofs only. The compound should be heated to the correct temperature to facilitate the proper flow characteristics. Enough hot bitumen must be applied to ensure each tile is fully bedded and the marked squares are followed. Adequate downward pressure should be applied to the tile to achieve a complete bond. To maintain a level surface for adjacent tiles excess bitumen must be spread or removed immediately. Should bitumen be spilt onto the tile surface adequate time must be allowed for it to cool before removal. Care must be taken when working with hot bitumen. All necessary risk assessments must be undertaken prior to work commencing, applicable PPE worn and relevant COSHH and material safety data sheets available to the user.

Under no circumstances must hot bitumen be used to fix tiles to asphalt. The use of cold applied bitumen and other nonapproved fixing compounds should be avoided. These may contain solvents and other chemicals harmful to bituminous based substrates. **If in doubt the manufacturer's advice should be sought before commencing work.**

PU Adhesive

Eurodec PU Adhesive is a moisture activated formulation of diphenylmethane-4,4'-diisocyanate adhesive designed to bond Eurodec tiles to asphalt and felt. It can be used in adverse weather conditions that normally prohibit the laying of tiles. Supplied in 1 litre bottles, its coverage is 50 tiles (approx). The material has a 6 month shelf from the date of purchase. Despite its suitability in damp and humid conditions it should not be used if rainfall is anticipated immediately after use as exposure to standing water in an uncured state will result in a loss of adhesion. Similarly PU should not be used on substrates affected by frost or in temperatures below 5 degrees centigrade.



Application

The nozzle should be cut to allow a 5mm bead (fig. 1) to be applied onto the tiles in 3 zig-zag shaped lines leaving a 20mm adhesive free border around the perimeter of the tile but extended to the corners of the inner area (fig. 2). The beads must be within the necessary tolerances to ensure an even expansion and subsequent level finish. Not more than 6 tiles must be prepared in advance (fig.3), once applied to the tile PU will begin to react with moisture in the atmosphere, prolonged exposure will result in a part cure leading to a reduced adhesion. Once in place downward pressure must be applied to the tile to achieve optimum contact with the substrate. This will facilitate an outward linear expansion to the edges and corners resulting in an ultimate coverage of some 70-80%. Follow this procedure for cut tiles. Excess adhesive may exude into the movement joint. It is important to allow this to cure fully before careful mechanical removal is attempted. Great care should be taken to avoid uncured PU spillages onto tile surfaces as staining will occur. Curing times for PU will vary depending on atmospheric conditions and temperature; however it is recommended a 24 hour period should be allowed before the tiles are trafficked.

Important Note: Some felt manufacturers apply talcum or release agents, this must be removed otherwise adhesion will be reduced. PU samples are available for evaluation purposes.

Maintenance

Provided the roof has been correctly designed and constructed, a roof finish in Eurodec Promenade Tiles, subjected to normal pedestrian traffic will only require minor maintenance. In a similar manner to other concrete paving products algal growth, weeds or moss may occur. This can be treated with the use of a propriety biocide. Damaged tiles should be replaced as soon as possible. Any colour difference between new and existing tiles should diminish with age. Tiles may become discoloured with time, the rate depending on the locality. Appearance may be restored by cleaning with warm water and a stiff brush. There may be gradual change in colour but this should not be excessive provided the tiles are not subject to standing water. The tiles have good abrasion resistance. However care must be taken when moving patio furniture and maintenance equipment. To avoid scuff marks caused by rubber feet, or excessive wear from metal feet, chairs and tables, furniture should be lifted not dragged. Acid based cleaners must not be used, test any cleaner on a small area before use. Similarly high pressure washers must be avoided as the jet can damage the surface as well as weaken the bond between the tile and substrate. Staining can arise from food and drink spillages or from plants in the immediate vicinity. It is highly advisable to seal the tiles with Lithofin products (see below) to help protect against these occurrences.

Lithofin MN Stain Stop

In common with all cement based products, spillages from foodstuffs, algae growth and airborne contaminants can lead to staining and discolouration. Where the aesthetic appearance is especially important it is advisable to protect the tile surface.

Eurodec Promenade Tiles has combined with Lithofin, recognised as the worlds leading manufacturer of products for the cleaning, protecting and maintaining of stone, ceramic and concrete tiles. On request tiles can be factory treated with Lithofin MN Stain Stop. For in-situ applications MN Stain Stop Eco a water based version is recommended, this can be supplied in either 1 litre or 5 litre quantities depending on the size of the area. Lithofin cleaning and maintaining products are also available, please contact us for further details.



This information and any recommendations or suggestions contained herein are given in good faith without warranty or guarantee as conditions of use are outwith our control. Product development is continuous and tiles are subject to change without notice. Please ensure that our products will be suitable for use by requesting samples for your evaluation relating to colour and working conditions. All tiles are sold in accordance with our Terms and Conditions of Sale which are available on request. GRC Promenade Tiles are handmade products and therefore subject to a manufacturing tolerance.